

Netrix™ Software Tools

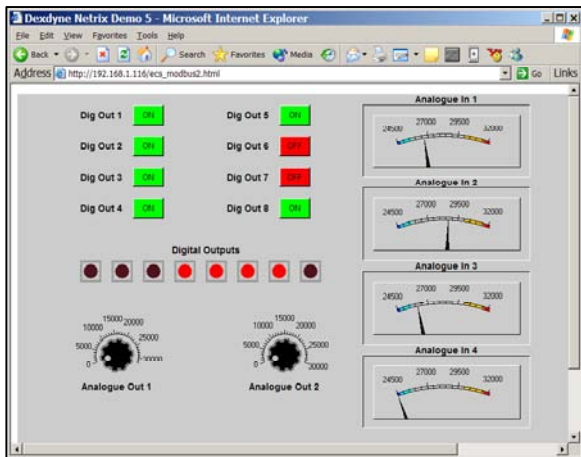
netrix Developer

netrix Developer is an easy-to-use tool for creating the graphical web pages that the remote operator of the **netrix** system sees. Running on a PC, connected locally or remotely to the **netrix 7000**, **netrix Developer** uses an intuitive drag-and-drop system to build control panels, and then link these graphics to the real-time data. No programming or HTML skills are required.

netrix Developer enables complex mimic diagrams and control panels to be created. It comes with an extensive library of graphical objects such as meters, counters, valves, pipes, graphs, knobs and sliders, which can be quickly built into mimic diagrams or virtual control panels. Users may also import and incorporate their own graphic images and photographs.

Once the mimic and control panels have been designed, they are linked to the real equipment using a simple virtual 'wiring panel', and the completed web pages downloaded into the **netrix 7000**.

netrix Developer runs on a Windows platform, and requires a java-enabled browser (IE5 or above recommended).

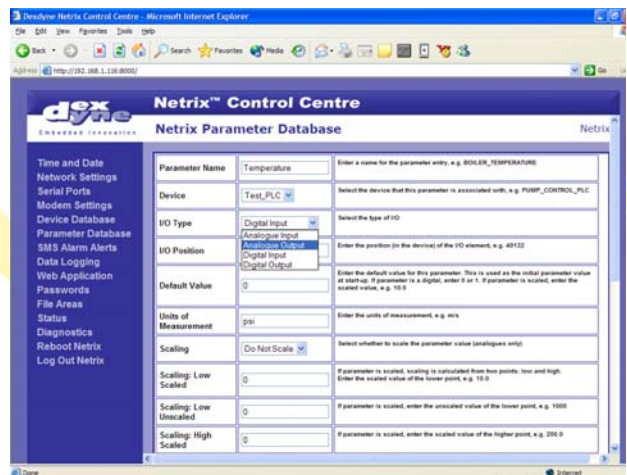


netrix Developer creates sophisticated virtual control panels and mimic diagrams using a simple drag and drop technique

netrix Control Centre

netrix Control Centre is a web-based tool for configuring **netrix 7000**. To use the tool, the site or installation engineer simply runs a web browser on a PC connected - either locally or remotely - to the **netrix 7000**. The **netrix 7000** is then configured using the interactive interface provided by **Control Centre**.

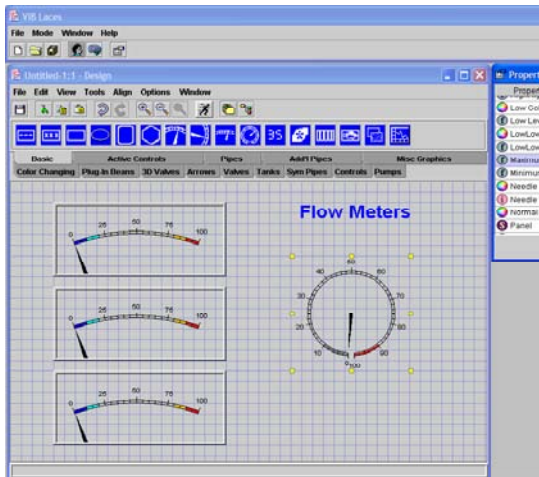
netrix Control Centre is used to set up all aspects of the **netrix 7000**, such as identifying the devices that are connected, the settings and parameters of these devices, alarm options, communications modes, etc. Use of the tool is password and SSL protected to prevent unauthorised access.



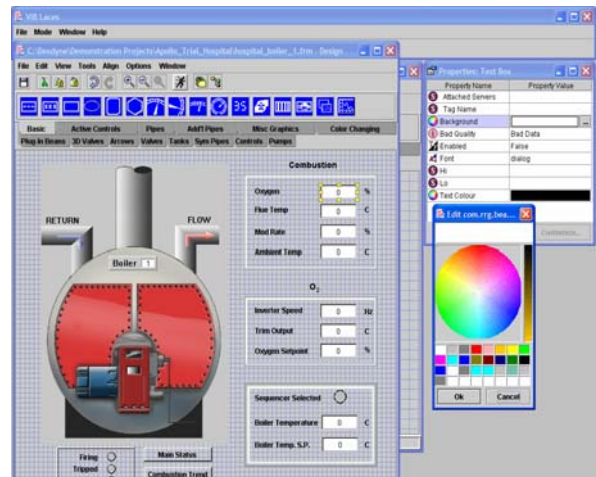
The **netrix Control Centre** tool is part of every **netrix 7000** unit.



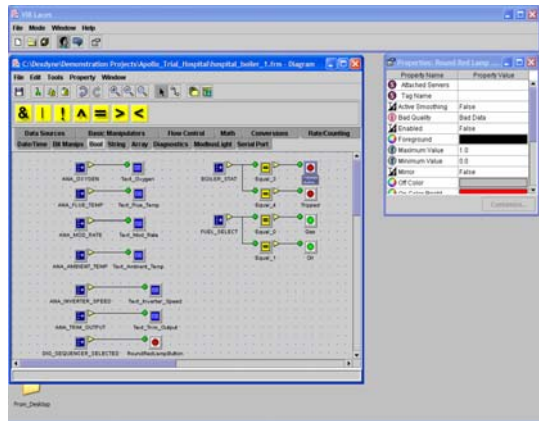
Creating an application using *netrix* Developer



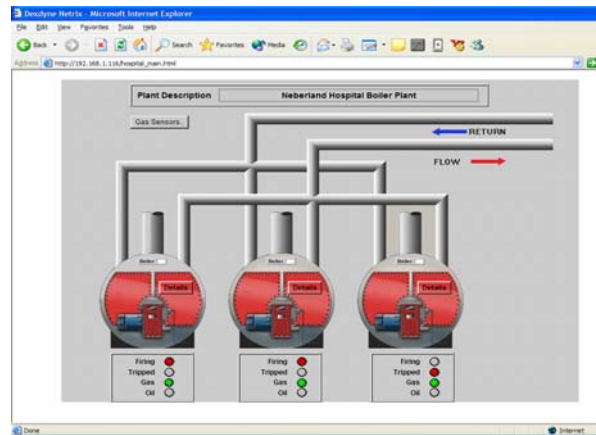
1. Compose your control panel using drag and drop



2. Lay out any mimic diagrams in the same way



3. Connect the panels and diagrams to the actual system data using the virtual wiring tool



4. Watch the system running in real time

Ordering Information

Item	Part Number
netrix Control Centre	- (Included with the netrix 7000)
netrix Developer (single user licence/multiple targets)	NDK
netrix Starter Kit (single user/single target)	NSK

Notes:

- **netrix Developer Lite**, an evaluation version of **netrix Developer** is included in the **netrix Starter Kit**; this version is restricted to working with a single **netrix 7000** target system.
- The full version of **netrix Developer** enables applications to be developed for multiple target systems.

For further information about *netrix* please see our website: www.dexdyne.com



Dexdyne Ltd.
Oakley House, Cirencester
Gloucestershire, GL7 1US
UK

Tel: +44 (0)1285 658122
Fax: +44 (0)1285 655644
Web: www.dexdyne.com
Email: sales@dexdyne.com